



**ACTIVE**<sup>TM</sup>  
AgriScience  
[activeagriscience.com](http://activeagriscience.com)

## TECHNOLOGY BEYOND the POINT of NUTRITION<sup>TM</sup>

Active AgriScience Inc. supports the farming community by providing innovative, effective and economical products. A leader in plant nutrient and bioactive compound research and technology, Active AgriScience uses rigorous scientific methods to develop full cycle fertilizer and nitrogen management solutions to help enhance crop potential while being mindful of environmental impacts.

3422 Millar Avenue  
Saskatoon, SK, S7K 5Y7, Canada  
tel.: 639.398.0485

### GUARANTEED MINIMUM ANALYSIS

Total Nitrogen (N) . . . . . 10%  
Soluble Potash (K<sub>2</sub>O) . . . . 14%  
Sulfur (S) . . . . . 6.5%  
Cytokinin - Kinetin . . . . 0.05%  
Iron (Fe)(actual) . . . . . 0.005%  
Amino acids . . . . . 0.03%  
Ascorbic acid . . . . . 0.003%  
Vitamin B complex . . . . 0.03%

[activeagri.com/active-grainfill](http://activeagri.com/active-grainfill)

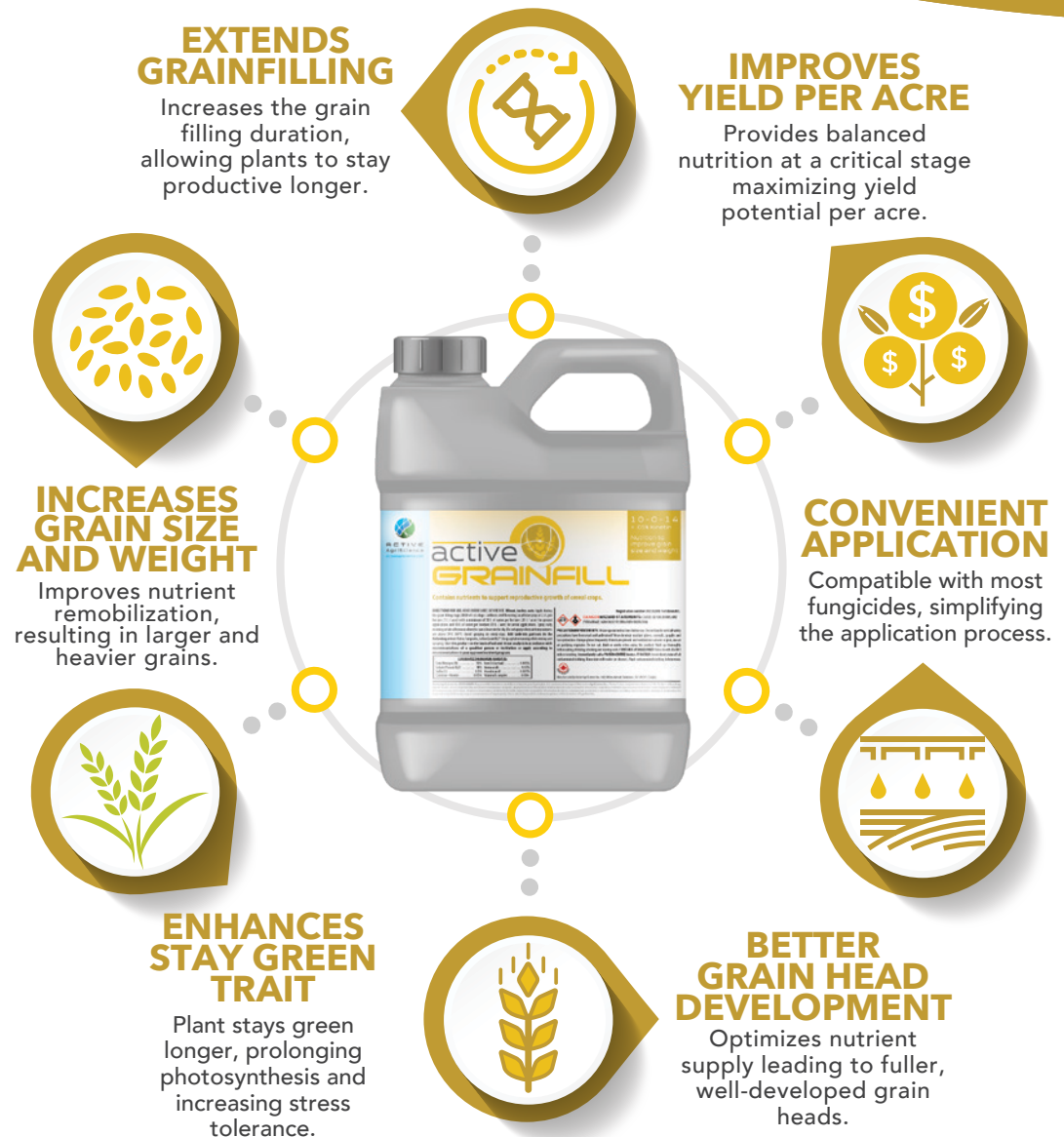


JUNE 7 2024

active  
**GRAINFILL**<sup>TM</sup>

**IMPROVES GRAIN  
SIZE AND WEIGHT**

**NUTRIENT PACKAGE**  
**10-0-14**  
**+ 6.5 S**  
0.05% Kinetin  
0.03% Amino Acids  
0.005% Iron



Boost Crop Performance with our  
**FULL SEASON FERTILITY PACKAGE**

active  
**PRIME**<sup>TM</sup>

active  
**BUILD**<sup>TM</sup>

active  
**FLOWER**<sup>TM</sup>

active  
**GRAINFILL**<sup>TM</sup>

SEEDING

EARLY GROWTH

FLOWERING / GRAINFILLING



**ACTIVE**  
AgriScience  
activeagriscience.com

ALWAYS READ LABEL BEFORE USE

## APPLICATION RATE

Apply as a foliar spray using 1 L per acre with a minimum of 20 L of water per acre for ground applications and 12 L of water per acre for aerial applications.

## APPLICATION TIMING

**Wheat, barley, oats:** Apply during the grain filling stage (BBCH 60-65 stage / anthesis-end flowering)

## COMPATIBILITY

This product is compatible with most fertilizers, and pesticides. Scan QR code for more information.

## AVAILABLE SIZES

10L, 500L, 1000L



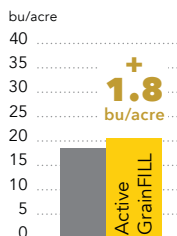
\*3<sup>rd</sup> party yield research with Ag-Quest and the University of British Columbia.

ACTIVE AGRISCIENCE DISCLAIMER: Presented Data and product attributes will not guarantee the future efficacy and product attributes as these vary greatly related to weather conditions soil types and genetics of crops. It is understood and agreed that Active AgriScience Inc. ("Active") does not guarantee that use of its Products will yield any specific result. Active's legal liability, and that of its employees or agents, arising from use of its products shall be limited to the cost paid for the product regardless of whether any loss arose from Actives own negligence, breach of contract, or any other cause. Under no circumstance shall Active be liable, beyond the cost paid for the product, for direct consequential, incidental, or special damages, including, but not limited to, damage or destruction of a crop, or contamination of any property.

**active**  
**GRAINFILL**<sup>TM</sup>

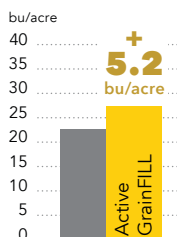
**IMPROVES GRAIN  
SIZE AND WEIGHT**

**WHEAT  
YIELD  
DATA**



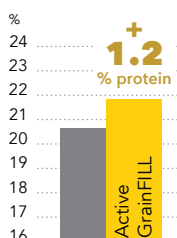
## 2020 YIELD DATA • 3<sup>RD</sup> PARTY RESEARCH BY AGQUEST\*

TREATMENTS	REP 1 (bu/acre)	REP 2 (bu/acre)	REP 3 (bu/acre)	REP 4 (bu/acre)	AVERAGE YIELD (bu/acre)	% CHANGE
Check	34	14	12	14	18.5	
Active GrainFILL <sup>TM</sup>	40	14	13	14	20.3	9.5



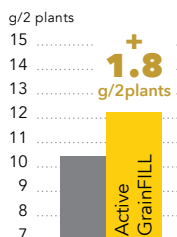
## 2021 YIELD DATA • 3<sup>RD</sup> PARTY RESEARCH BY AGQUEST\*

TREATMENTS	Application timing - Anthesis			Application timing - Milk stage		
	YIELD (bu/acre)	INCREASE (bu/acre)	% CHANGE	YIELD (bu/acre)	INCREASE (bu/acre)	% CHANGE
Check	22.6			22.6		
Active GrainFILL <sup>TM</sup>	27.8	5.2	23.0	23.9	1.3	5.8



## 2021 PROTEIN DATA • 3<sup>RD</sup> PARTY RESEARCH BY AGQUEST\*

TREATMENTS	AVERAGE PROTEIN (%)	PROTEIN INCREASE (%)	% CHANGE
Check	20.7		
Active GrainFILL <sup>TM</sup>	21.9	1.2	5.9



## 2021 SEED WEIGHT DATA • 3<sup>RD</sup> PARTY RESEARCH BY UBC\*

TREATMENTS	Weight of seeds (g/2 plants)								% CHANGE
	REP 1	REP 2	REP 3	REP 4	REP 5	REP 6	REP 7	AVERAGE WEIGHT	
Check	8.4	9.1	10.3	14.0	8.7	12.1	10.2	10.4	
Active GrainFILL <sup>TM</sup>	9.5	13.4	14.0	10.4	11.9	9.2	17.1	12.2	17.5